

SENSAPHONE[®]
REMOTE MONITORING SOLUTIONS

**New
Wireless
Sensors**

2800

Remote Monitoring with Wireless Sensors

Temperature

Power Failure

Humidity

Water Detection

Dry Contact

4-20mA

SENSAPHONE 2800
REMOTE MONITORING SYSTEM
WITH WIRELESS SENSOR TECHNOLOGY

It's For You

ALARM CANCEL

The Next Generation in Sensaphone Monitoring

Sensaphone Wireless Technology includes full analog capability so real world values can be monitored

Sensaphone Introduces Wireless Sensors!

Now you can monitor critical conditions at remote locations without running wires. Introducing the new Sensaphone 2800 with Wireless Sensor Technology. Based on proven Sensaphone remote monitoring methods, the 2800 adds the ability to read sensor status from wireless sensors. And not just simple on/off status, or open/closed conditions. The Sensaphone Wireless Technology includes full analog capability so real world values can be monitored, like actual temperatures, real tank levels and flow rates.

You can use up to four of the Sensaphone wireless sensors with the 2800. A variety of wireless sensors types are available to choose from, including ...

Temperature

Humidity

Power Failure

Motion Detector

Water on Floor

In addition to the wireless sensors, there are also two Wireless Interface modules. These allow you to connect to existing equipment or sensors and transmit their status back to the 2800 wirelessly. There is a Dry Contact wireless module, and even a 4-20mA wireless module. The 4-20mA wireless module even provides battery backed 24 VDC loop power for your transducer.

Place It Anywhere!

Most of the Sensaphone Wireless Sensors run on batteries for up to 3 years. You can literally, just place a sensor on the wall and start monitoring right away. The 2800 will scan, find the sensor, self configure and do most of the work for you. All you need to do is to record a custom voice message and fill in a few parameters.



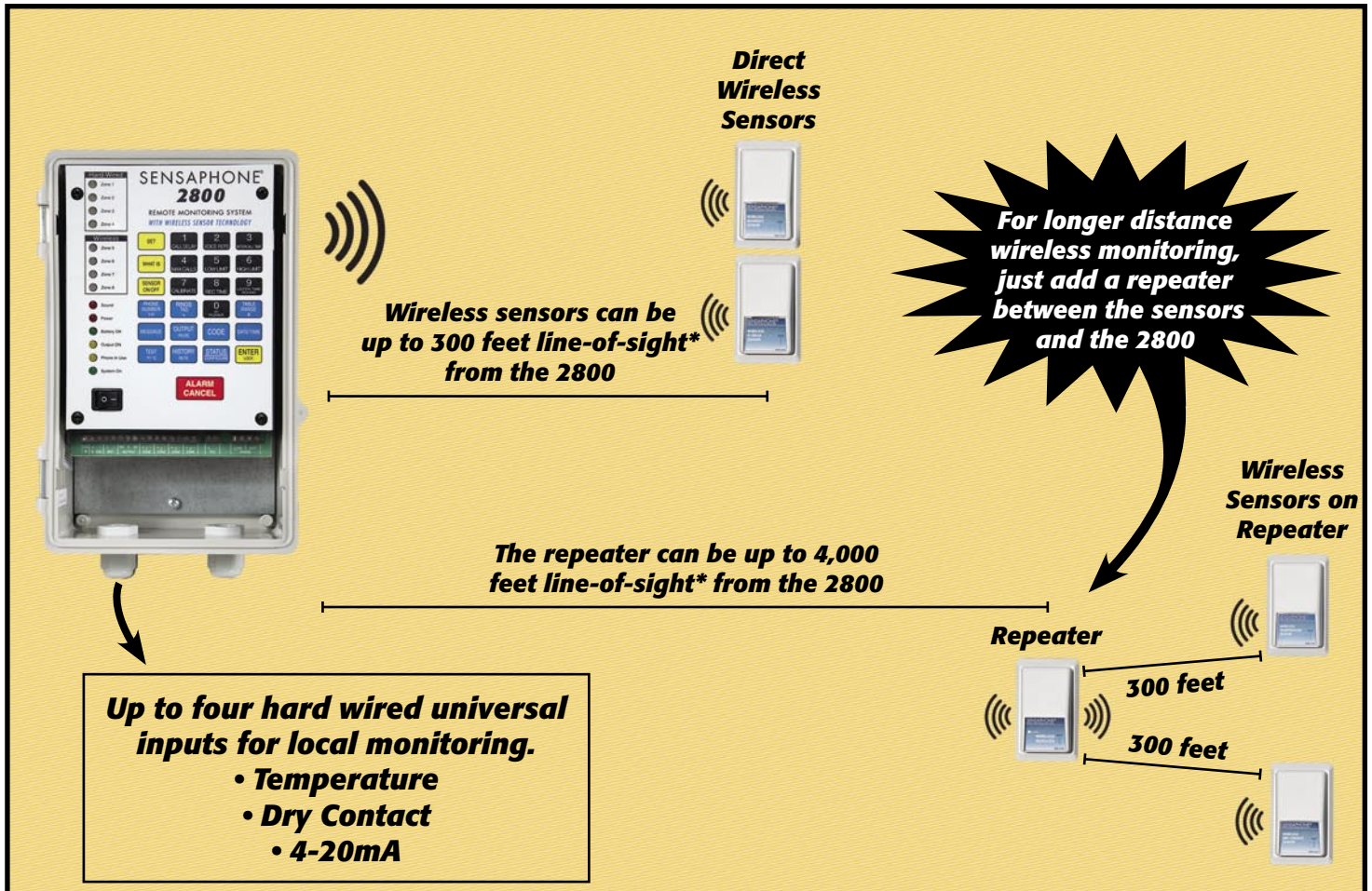
Start getting rid of your wires!

Self Diagnostics

The Wireless Sensor Network is always being watched by the 2800. In addition to looking for alarms from the sensor values, it is also looking to make sure that each wireless sensor is fully functional and its batteries are full. If there are any problems with the wireless sensors, the 2800 will initiate a diagnostic alarm and notify the appropriate personnel immediately.

Where You Need It

Also included on the 2800 are four traditional, hard-wired sensor inputs. These are Sensaphone Universal Inputs that can be used with temperature sensors, dry contact sensors, and even 4-20mA transducers. So, when you have monitoring requirements near the 2800, just wire them in. When wiring is inconvenient or further away, just place the wireless sensors where you need them. The wireless sensors will operate up to 300 feet line-of-sight* away from the 2800. Not far enough? Just add a wireless repeater to go farther. The repeater can be located up to 4,000 feet line-of-sight* from the 2800. Then, one or more sensors can be located up to 300 feet line-of-sight* from the repeater.



***Wireless Distance Note:** The “line-of-sight” wireless distance is the maximum distance that the wireless devices can communicate with each other in a best-case scenario. A “line-of-sight” path would be when there are no obstructions at all between the two devices. When the wireless path must go around metal objects and/or reinforced concrete walls, the reliable wireless distance will be reduced. When the 2800 is communicating directly with the sensors, the line-of-sight distance is 300 feet, and a typical indoor distance with obstructions is approx. 100 feet. When the 2800 is communicating with a repeater, the line-of-sight distance is 4,000 feet, and the typical indoor distance with obstructions is approx. 300 feet. Experimentation may be required to determine actual wireless range.

Notification

Just like the other Sensaphone products, the 2800 uses the reliability of a standard phone line to make phone calls to the appropriate personnel to announce alarm conditions. Each monitoring condition, both wired and wireless, can have a custom voice message attached to it. Each message is recorded in your own voice for easy alarm identification. Alarm notification will repeat out to eight people until acknowledged.

Applications

Use the 2800 to monitor multiple greenhouses without wires, multiple barns, coolers, freezers, or a wide variety of remote equipment. The new Sensaphone 2800 can be used anywhere you would use our other Sensaphone products. The 2800 just makes installation and expansion faster and easier. Extend your reach and monitor your critical remote locations with the new Sensaphone 2800.

Available Wireless Sensors



Wireless Temperature Sensor

Can be wall mounted with screws or double-sided foam tape. Measures temperature from 32°F to 115°F (0°C to 57°C). Adding FGD-0101 temp sensor extends range down to -109°F (-85°C). Includes AAA batteries that will run for approx. 3 years. Optional AC adapter so batteries are only used during power failure.....WSR-0100



Wireless Dry Contact Sensor

Can be wall mounted with screws or double-sided foam tape. For Normally Open or Normally Closed contacts. Includes 3 AAA batteries that will run for approx. 3 years. Optional AC adapter so that batteries are only used during power failure.WSR-0101



Wireless Power Failure Sensor

Can be wall mounted with screws or double-sided foam tape. Comes with AC adapter for sensing power failure. Monitors power failure from wherever the AC adapter is plugged into. Includes 3 AAA batteries to operate during a power failure.WSR-0102



Wireless Humidity Sensor

Can be wall mounted with screws or double-sided foam tape. Measures humidity from 0 to 100% RH. Includes 3 AAA batteries that will run for approx. 3 years. Optional AC adapter so that batteries are only used during power failure.....WSR-0103



Wireless 4-20mA Sensor

Can be wall mounted with screws or double-sided foam tape. Works with any 4-20mA transducer. Custom table range so monitoring is in real engineering units. Built-in 24 volt power supply for providing 4-20mA loop power. Includes AC adapter. Also includes 3 AAA batteries for full operation during a power failure.....WSR-0104



Wireless Motion Detector

Can be wall mounted with screws or double-sided foam tape. Detects movement in a specific area for unauthorized entry or intrusion. Includes 3 AA batteries that will run for approx. 3 years.WSR-0105



Wireless Spot Water Detection Sensor

Must be placed directly on floor. Detects the presence of water on the floor. Includes 3 AA batteries that will run for approx. 3 years.WSR-0106



Wireless Zone Water Detection Sensor

Detects the presence of water on a floor or in a false ceiling. Comes with 10 feet of water rope to cover a larger area than WSR-0106. Includes 3 AA batteries that will run for approx. 3 years. Optional AC adapter so that batteries are only used during power failureWSR-0107



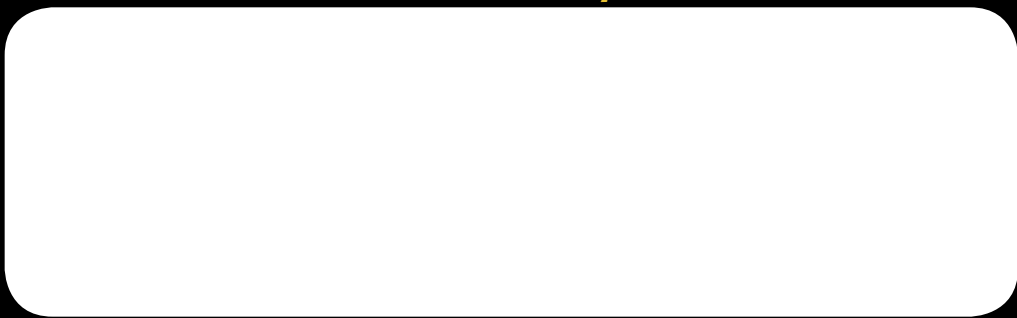
Wireless Repeater

Can be wall mounted with screws or double-sided foam tape. Extends wireless sensor range up to 4,000 feet line-of-sight.* Includes AC adapter. Also includes 3 AAA batteries for full operation during a power failure.WSR-0199

Specifications subject to change without notice.

Please see our catalog or visit sensaphone.com for a complete list and specifications of hard wired sensors.

Distributed By:



SENSAPHONE®
901 Tryens Road
Aston, PA 19014
PH: 610-558-2700
F: 610-558-0222
www.sensaphone.com